

# Stripe Rust Found In Louisiana Wheat; Likely Lurking In Arkansas Fields

FAYETTEVILLE, ARK.

Louisiana winter wheat growers are reporting stripe rust in their fields, and while none has been reported in Arkansas, it's likely to be lurking, Dr. Gene Milus, University of Arkansas Division of Agriculture wheat

susceptible varieties in southern Arkansas should be scouted now to determine if stripe rust is present," he said.

Division of Agriculture extension pathologist Dr. Rick Cartwright and wheat agronomist, Dr. Jason Kelley, said the finding of rust in

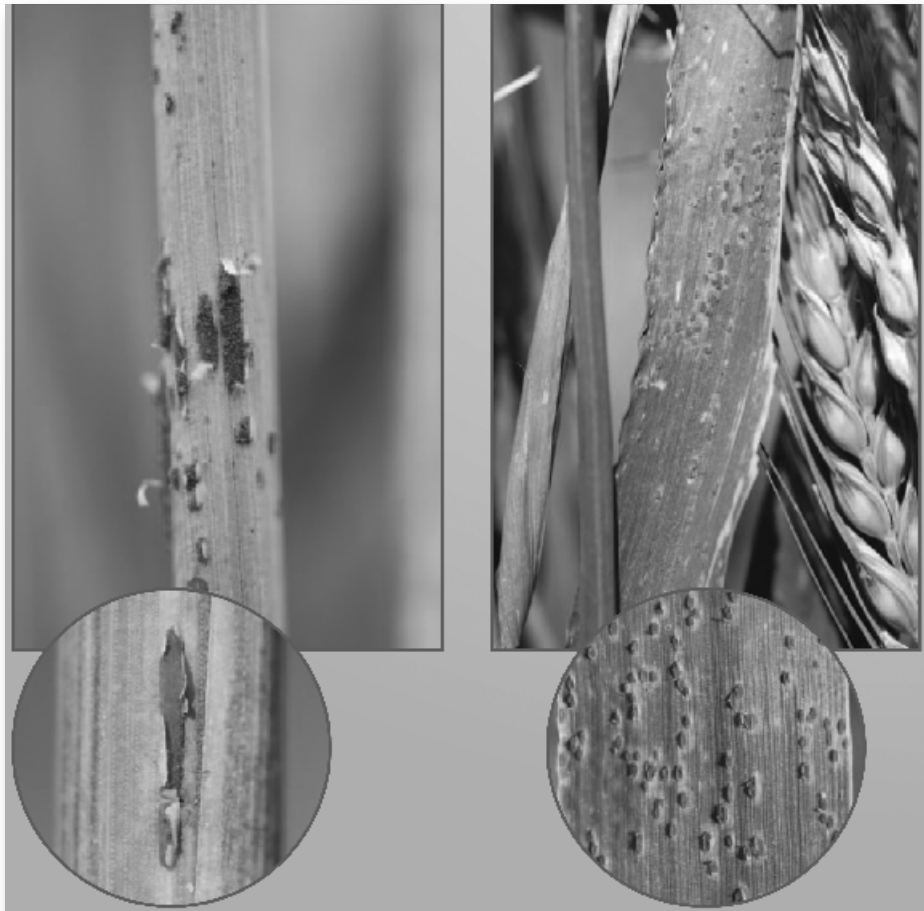


Photo courtesy of U of A

pathologist, said Friday.

Stripe rust can cause yield losses if not managed.

As of March 17, "stripe rust has been reported to be widespread, but not yet severe in Louisiana," he said.

"The stripe rust may be caused by a different race than we have been dealing with since 2000, because stripe rust has been reported on the variety 'Magnolia' that has been resistant in Arkansas."

Milus said the fungus could be at levels too low to detect in field surveys.

"Fields of Magnolia and very susceptible and

Louisiana was not a call to apply fungicide, but a warning to monitor wheat in Arkansas over the next few weeks.

"Stripe rust has a way of building up and surprising us under the right weather conditions," Cartwright said.

Kelley said growers and consultants could use the heads up "at least be forewarned and prepared."

For more information contact your county extension office, or see "Rust Diseases of Wheat," [www.uaex.edu/Other\\_Areas/publications/PDF/FSA-7547.pdf](http://www.uaex.edu/Other_Areas/publications/PDF/FSA-7547.pdf), and "Identifying Rust Diseases of Wheat and Barley," [www.aragriculture.org/diseases/Wheat/rust\\_diseases.pdf](http://www.aragriculture.org/diseases/Wheat/rust_diseases.pdf) Δ

syngenta

Link Directly To: **SYNGENTA**